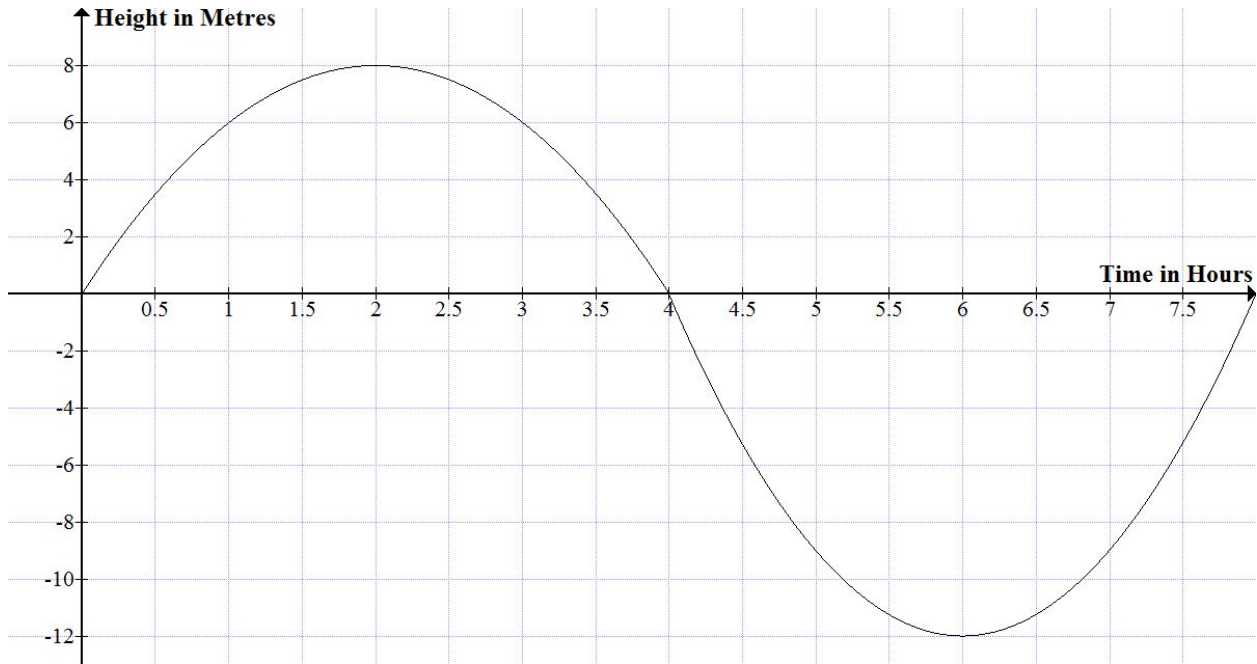


Signs of a Function (Positive, Negative, Zeros)

1. The height of a dolphin's dive is modelled by the function below.



Over what interval was the dolphin above sea level? _____

Over what interval was the dolphin below sea level? _____

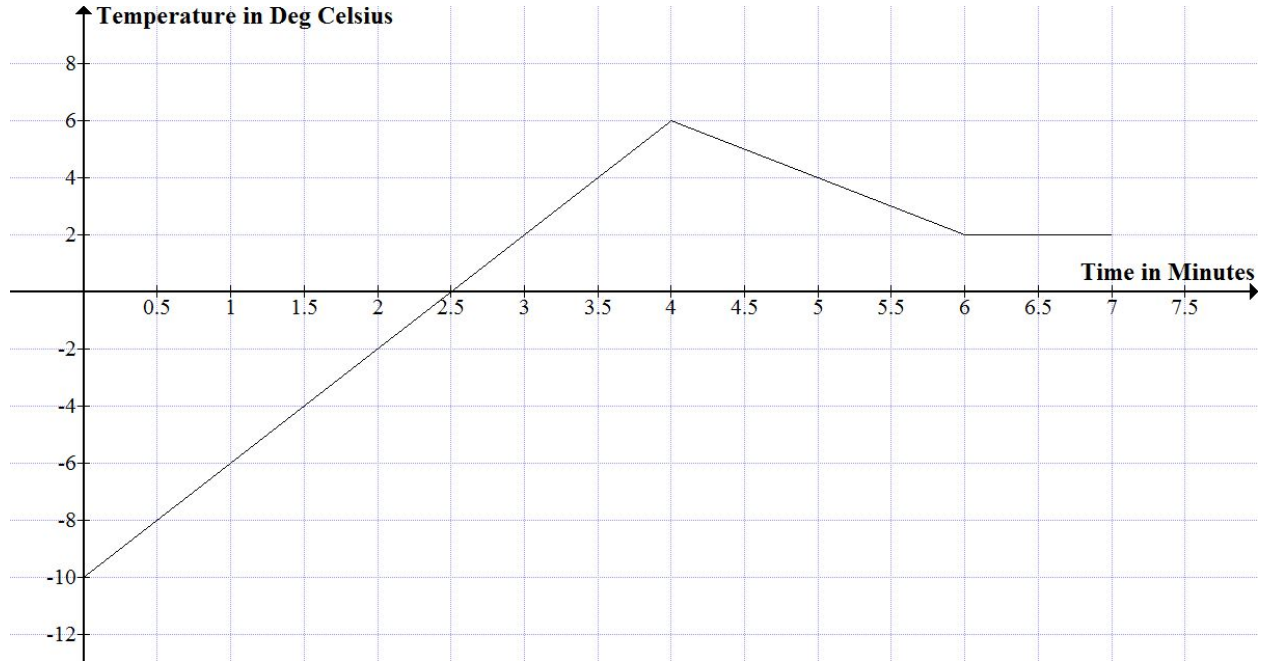
At what time(s) was the dolphin at sea level? _____

When is this function positive? _____

When is this function negative? _____

What are the zeros of this function? _____

2. The temperature of a substance during an experiment is recorded in the graph below.



Over what interval was the temperature above zero? _____

Over what interval was the temperature below zero? _____

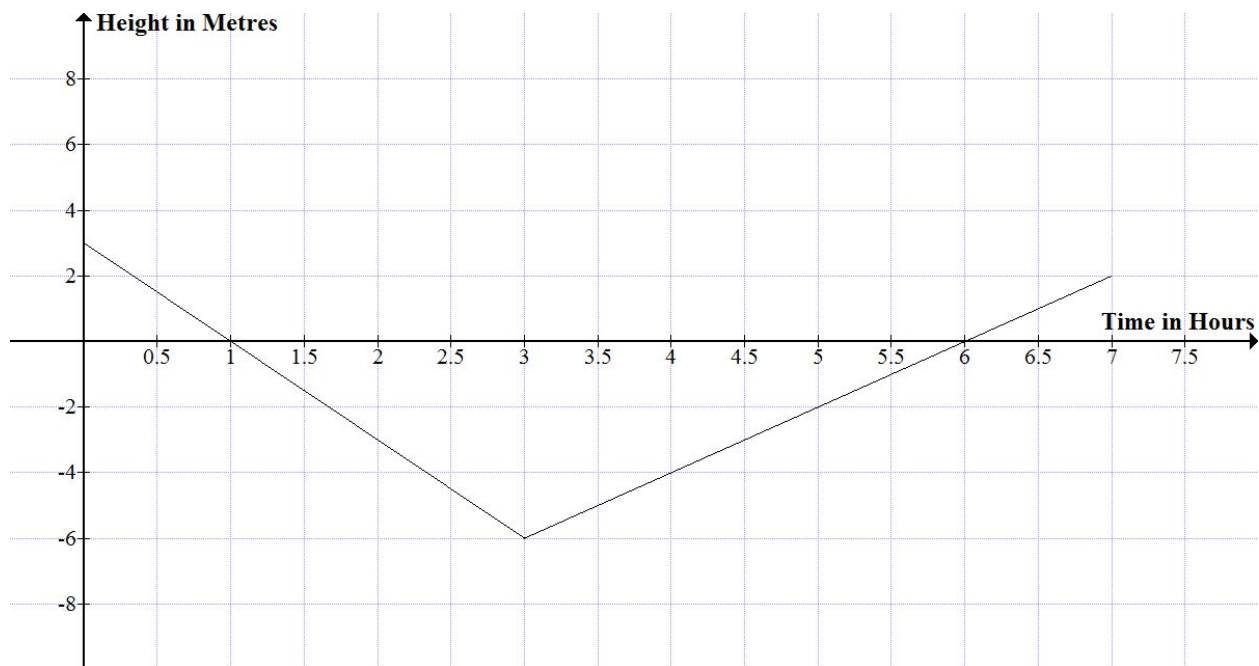
At what time(s) was the temperature zero? _____

When is this function positive? _____

When is this function negative? _____

What are the zeros of this function? _____

3. The height of spelunkers as they explore caves is recorded in the graph below.



Over what interval(s) were the spelunkers above sea level? _____

Over what interval(s) were the spelunkers below sea level? _____

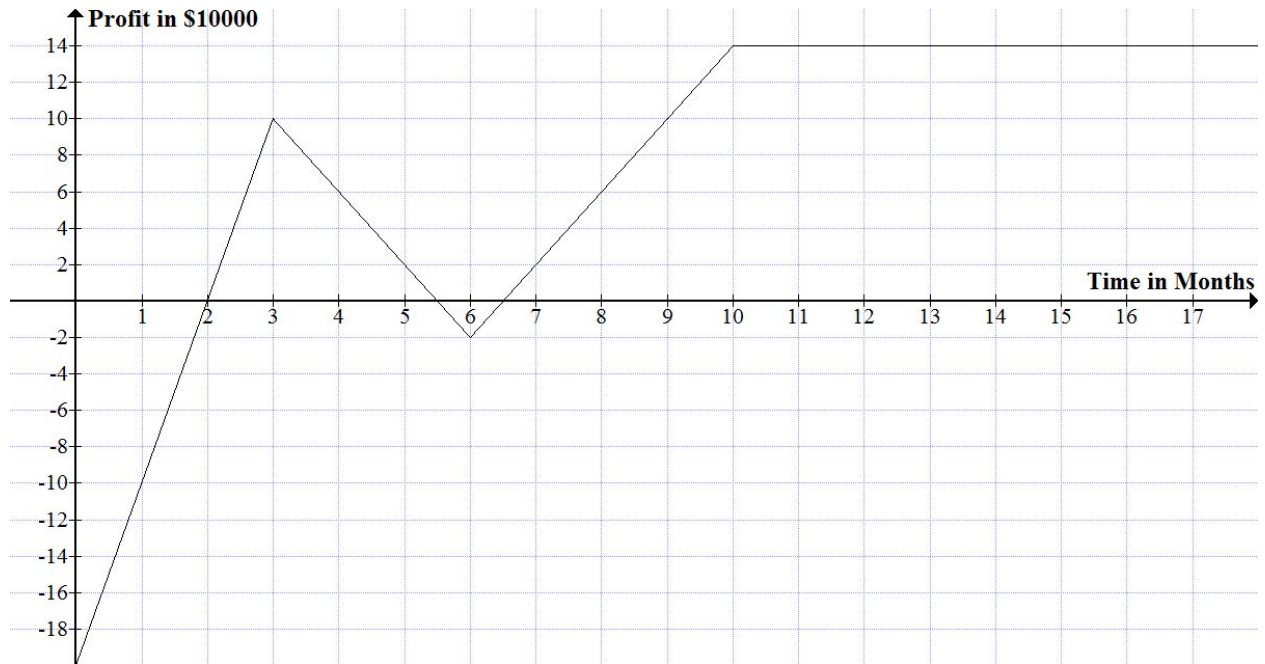
At what time(s) were the spelunkers at sea level? _____

When is this function positive? _____

When is this function negative? _____

What are the zeros of this function? _____

4. The profit recorded by a new company is shown in the graph below.



Over what interval(s) was the company making a profit? _____

Over what interval(s) was the company losing money? _____

At what point(s) did the company break even? _____

When is this function positive? _____

When is this function negative? _____

What are the zeros of this function? _____