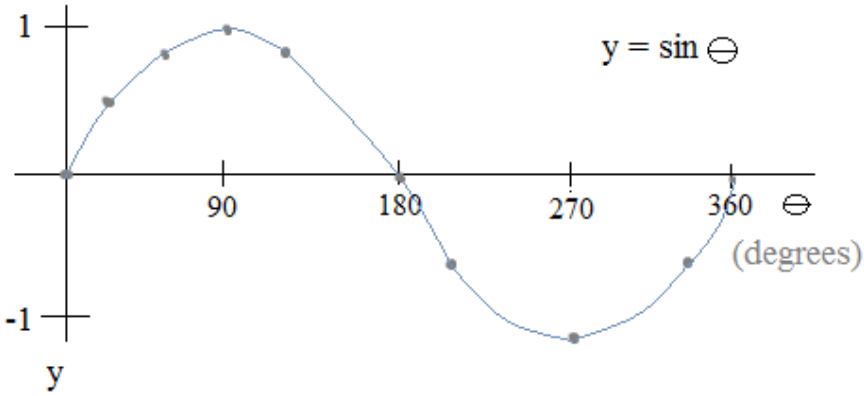
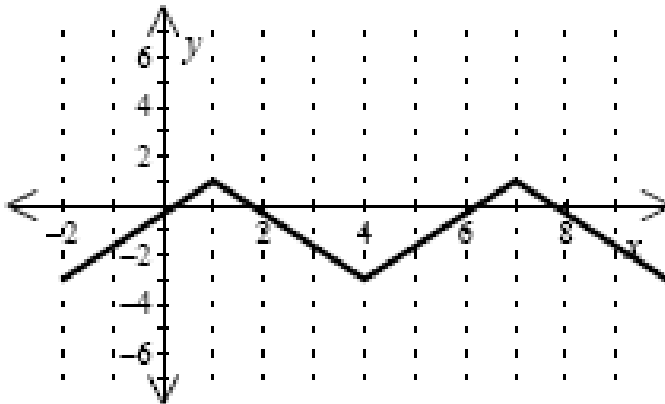


1. For the following function:



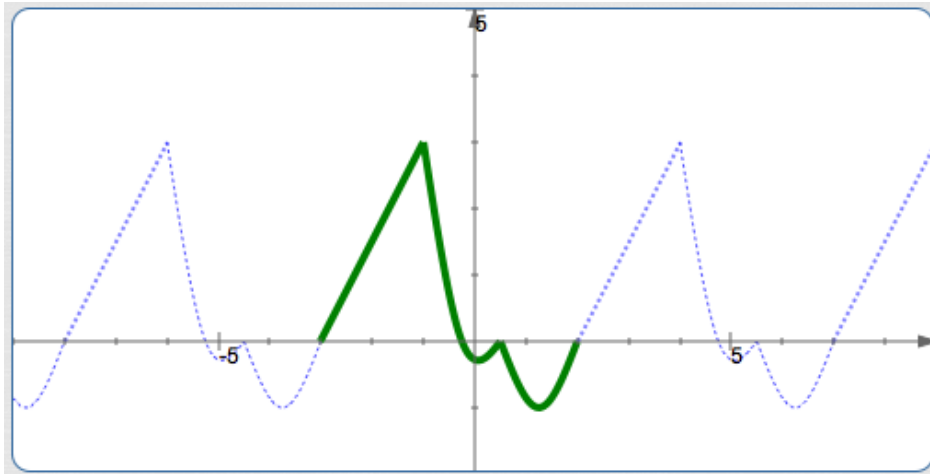
- a) Determine the period
- b) Evaluate $f(90)$
- c) Evaluate $f(900)$
- d) Evaluate $f(2070)$

2. For the following function:



- a) Determine the period
- b) Evaluate $f(1)$
- c) Evaluate $f(4)$
- d) Find the rule for the linear function from $(1, 1)$ to $(4, -3)$ use this rule to evaluate $f(3)$
- e) Evaluate $f(21)$

3. For the following function:



a) Determine the period

b) Evaluate $f(-3)$

c) Evaluate $f(2)$

d) Evaluate $f(-1)$

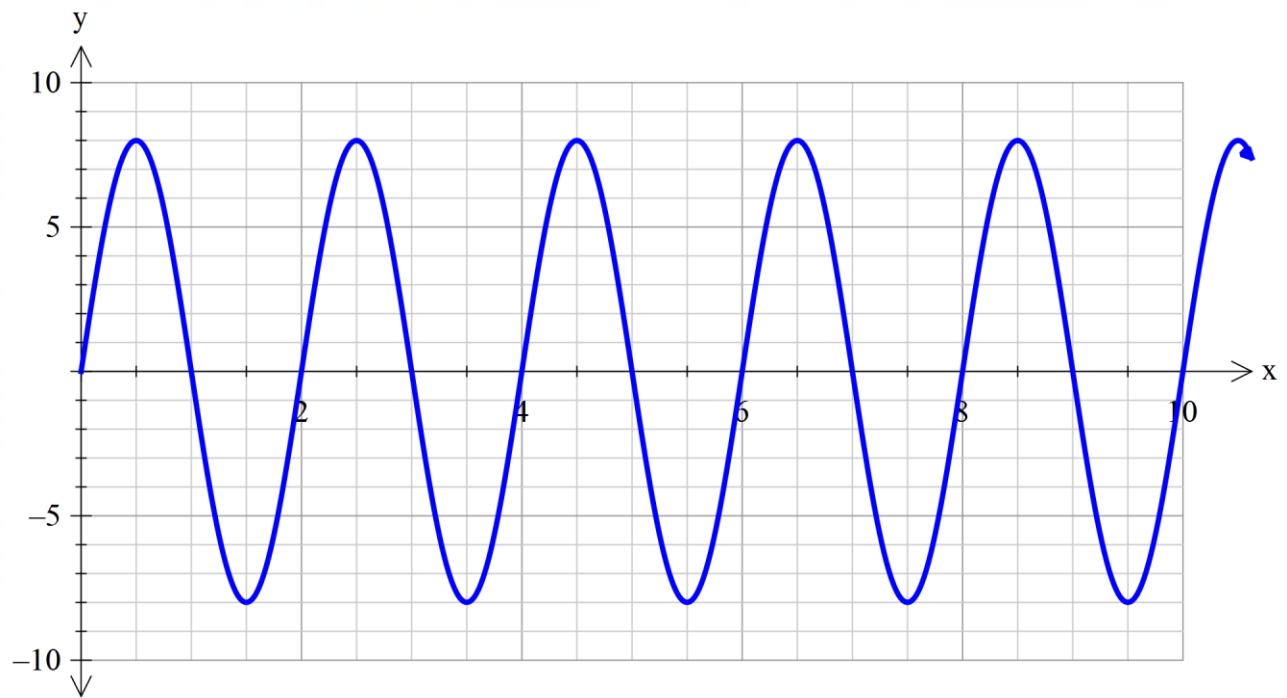
e) Find the rule for the linear function from $(-3, 0)$ to $(-1, 3)$ use this rule to evaluate $f(-2)$

f) Evaluate $f(48)$

g) Evaluate $f(398)$

h) Evaluate $f(1002)$

4.



a) Determine the period

b) Evaluate $f(-3)$

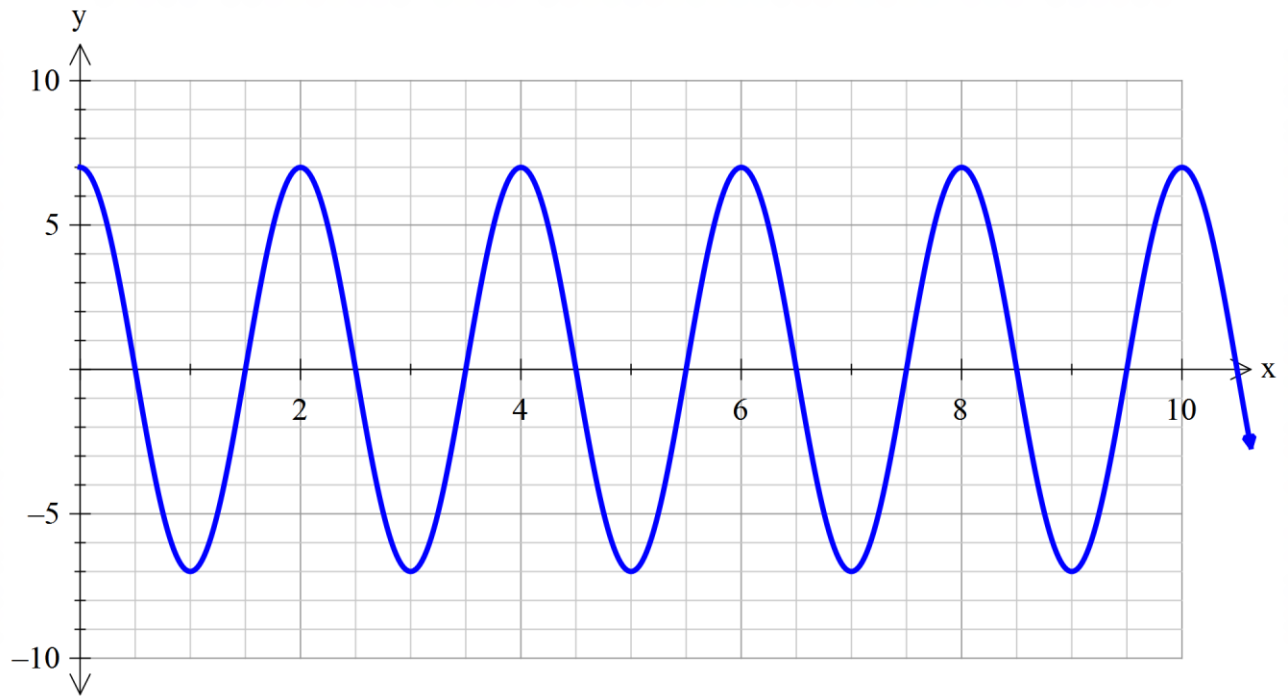
c) Evaluate $f(2.5)$

d) Evaluate $f(-1)$

e) Evaluate $f(48.5)$

f) Evaluate $f(398)$

5.



a) Determine the period

b) Evaluate $f(-3)$

c) Evaluate $f(2.5)$

d) Evaluate $f(-1)$

e) Evaluate $f(48.5)$

f) Evaluate $f(398)$