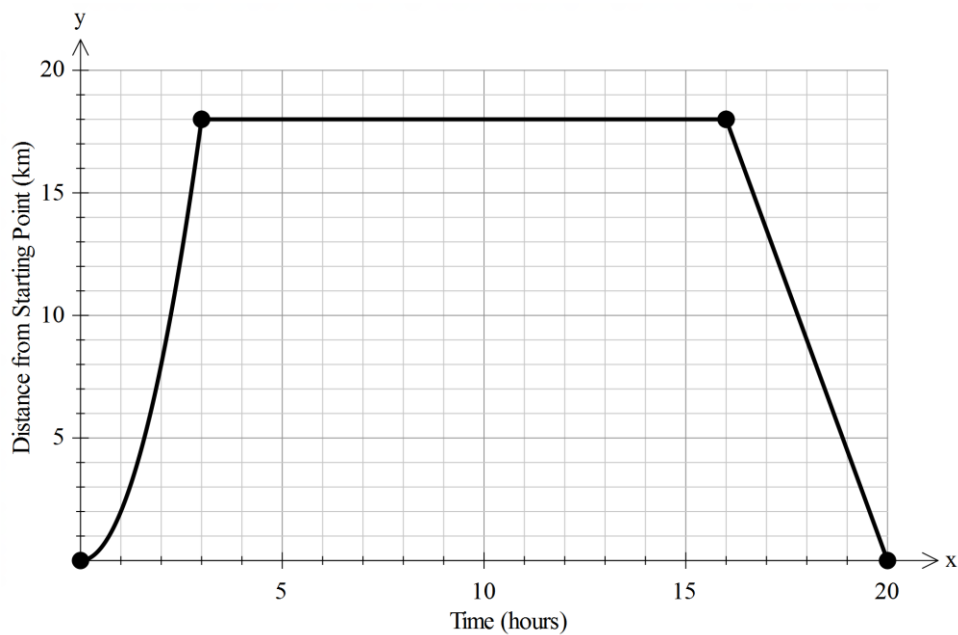


### Piecewise Practice – Long Answer Questions.

Name: \_\_\_\_\_

1. The following is a graph of a cyclist's trip.

The first part is quadratic, the second is constant and the third part is linear.

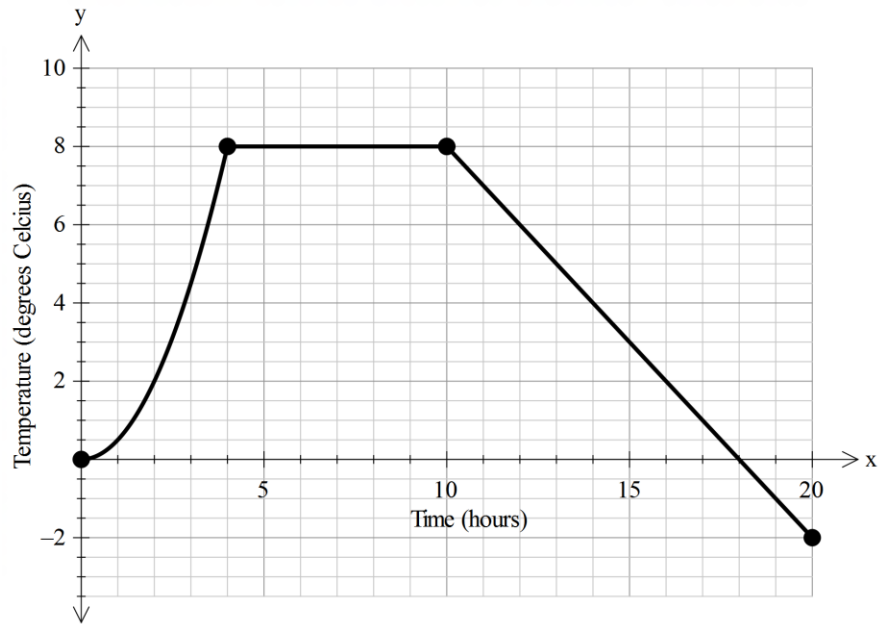


How far from home was the cyclist:

- a) after 2.5 hours?
- b) after 12.5 hours?
- c) after 17.5 hours?
- d) For how long was the cyclist more than 8 km from the starting point?

### Piecewise Practice.

2. The following is a graph of the temperature of a substance during an experiment.  
The first part is quadratic, the second is constant and the third part is linear.



What was the temperature:

- a) after 2.5 hours?
- b) after 7.5 hours?
- c) after 17.5 hours?
- d) For how long was the temperature below 2 degrees Celcius?